

FOREST
CARBON



Sustainability
Tech

Data-Driven Landscape Management
IoT Sensor Case Study

PROBLEM OVERVIEW

Indonesia's peatland areas at risk



UNMANAGED AREAS NEED MONITORING

- Dry, degraded peatland forest areas can easily catch fire
- Fires can burn for weeks underground and are hard to extinguish
- Sumatra and Kalimantan hold an estimated **13 million ha** of peatland
- **Over 20%** is unmanaged, degraded landscape
- BRG has identified “priority areas” and has begun long-term restoration activities
- However, an immediate solution is needed to reduce risk to these areas during the coming 2020 fire season

PEATLAND FIRES ACCELERATE CLIMATE CHANGE



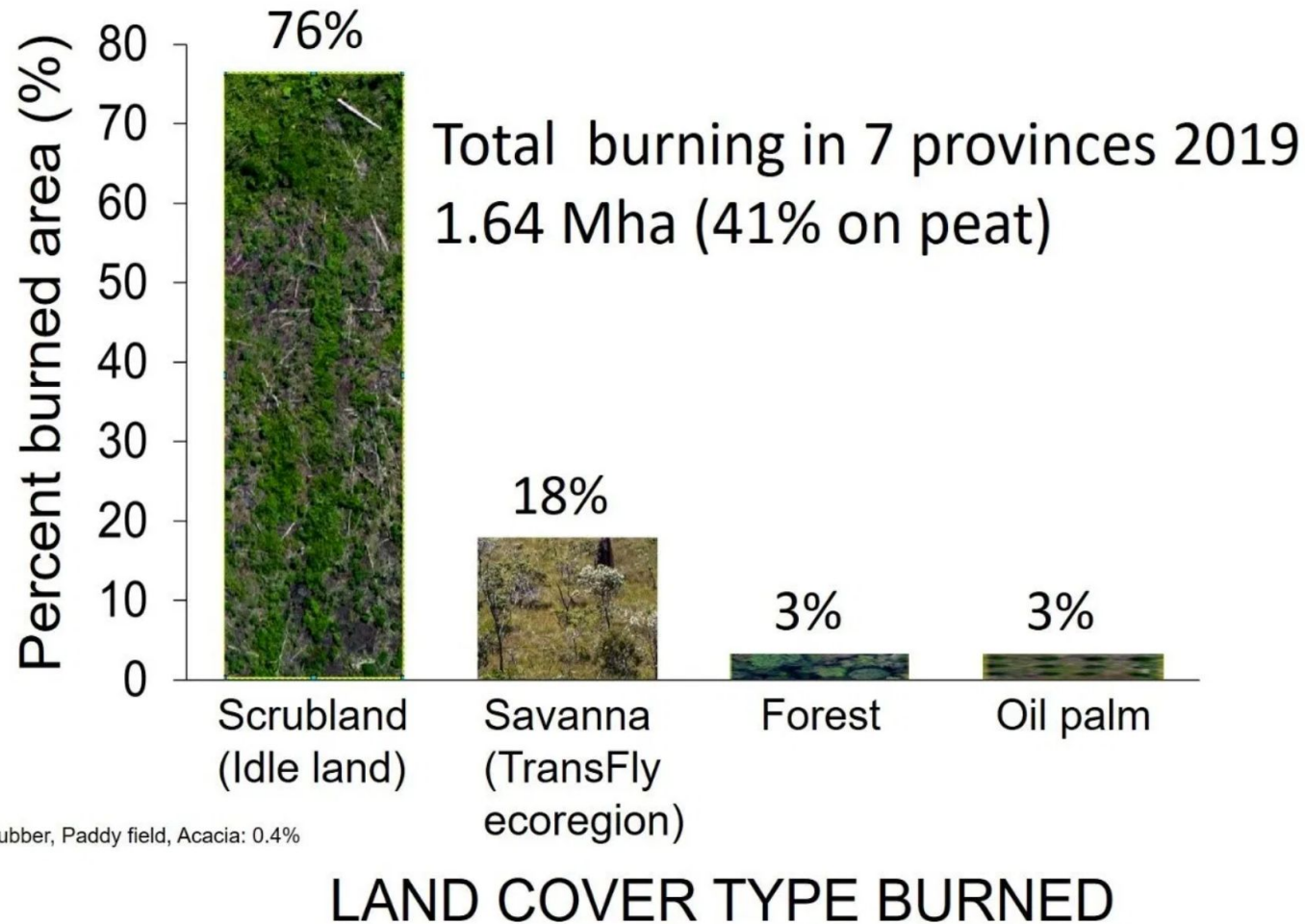
More than 5,000 fires spread across Indonesia in 2019, causing a regional haze crisis and accelerating climate change.

LANDSCAPES ARE AT RISK

Indonesia 2019 Fires

- Caused \$5.2 billion in economic losses
- Burned 942,000 hectares
- Caused GhG emissions double that of the Amazon fires in the same year
- 900,000 people reported respiratory illnesses due to haze in the region.
- Source (World Bank)

PEATLAND FIRES ACCELERATE CLIMATE CHANGE



- Of the areas burned in 2019 a 76% were on unmanaged peat or scrubland cleared for industrial purposes
- Many of these ecosystems still have high conservation values, and potential for long-term restoration

CASE STUDY

**Better data can prevent fires
before they occur**



CASE STUDY – SUMATRA MERANG PEATLAND PROJECT



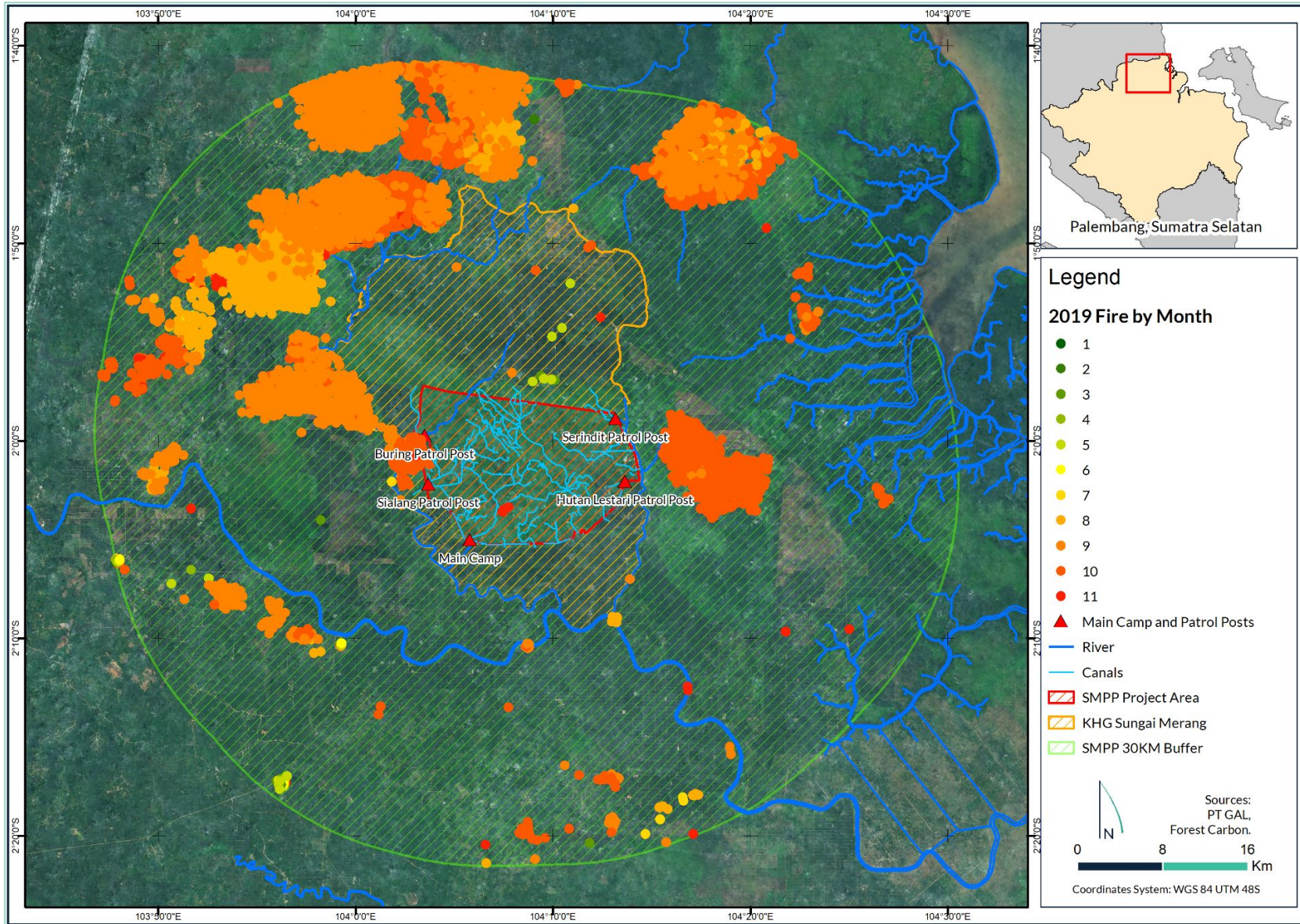
- Fire risk in the landscape is high
- 23,000 ha peatland restoration area is hard to access on foot
- Carbon offset production reliant on water table measurements

CASE STUDY – SUMATRA MERANG PEATLAND PROJECT



- SMPP initially tested **20 sensors** in 2019
- The project will deploy **70 additional** sensors in 2020
- Sustainability Tech sensors connect to an **IoT sensor hub**
- Water table sensors monitor peat hydrology **in real time**
- R&D funding from **Winrock and Packard foundation** refined hardware design across two sites in Kalimantan
- Sustainability Tech continues product R&D, for testing and deployment in **new Forest Carbon projects**

CASE STUDY – IOT SENSORS PROVIDE ACTIONABLE DATA



Mitigating fire risk:

- 1,968 hotspots were detected within 30km of SMPP in 2019
- IoT sensors provide real-time data on water table levels
- Areas with low water levels present the highest fire risk

CASE STUDY – IOT SENSORS PROVIDE ACTIONABLE DATA



Mitigating business risk

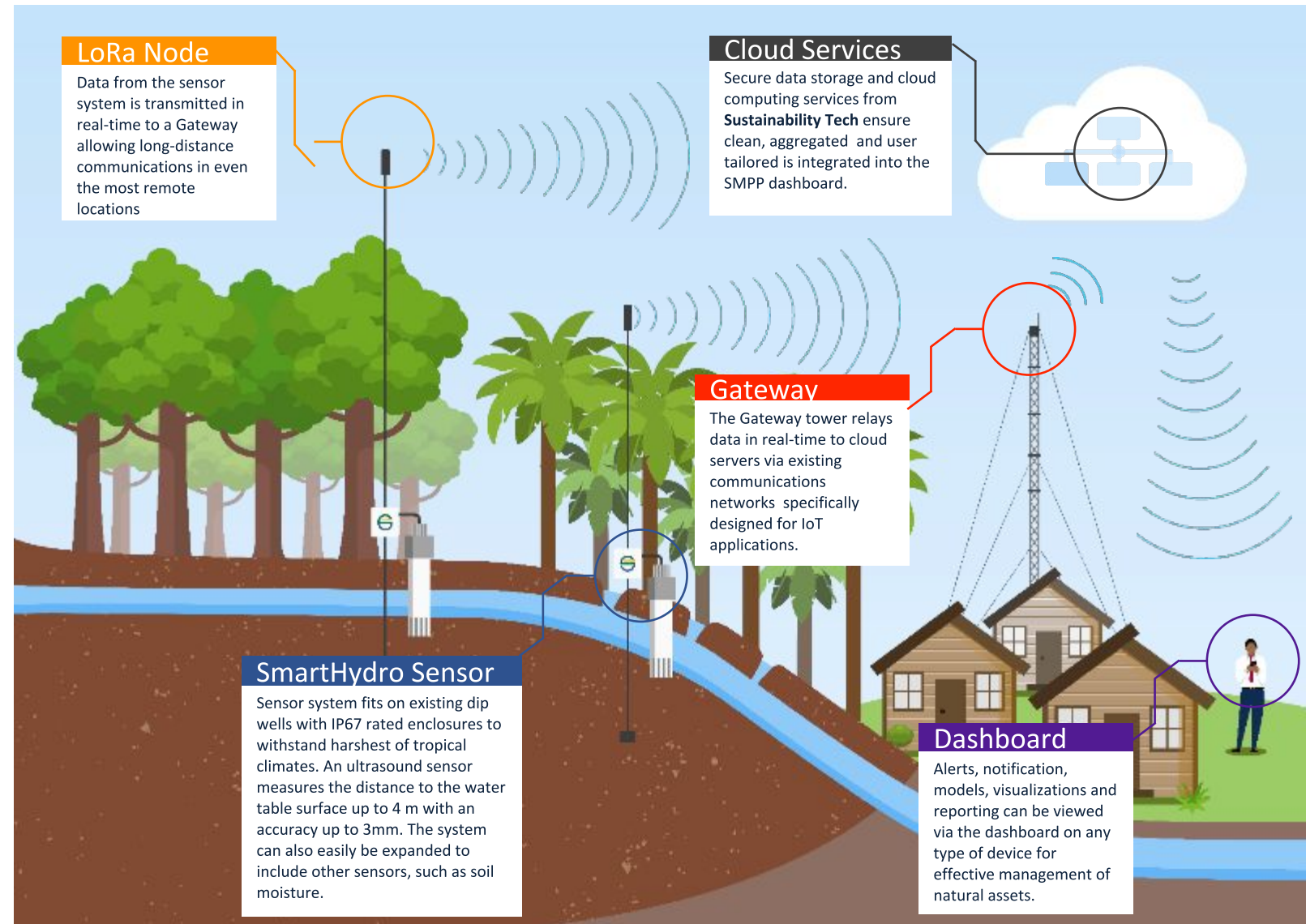
- Data on water levels are required to verify emissions reductions
- IoT sensors record this information more reliably, in real time

Improving project design

- Hydrology model guides placement of peat compaction dams
- Sensors refine the project hydrology model

IoT Sensor Hub:

- Water level data uploaded via central gateway
- Other sensors can be added to the proprietary IoT hub
- Mobile and email alerts for fire risk





Hardware Overview:

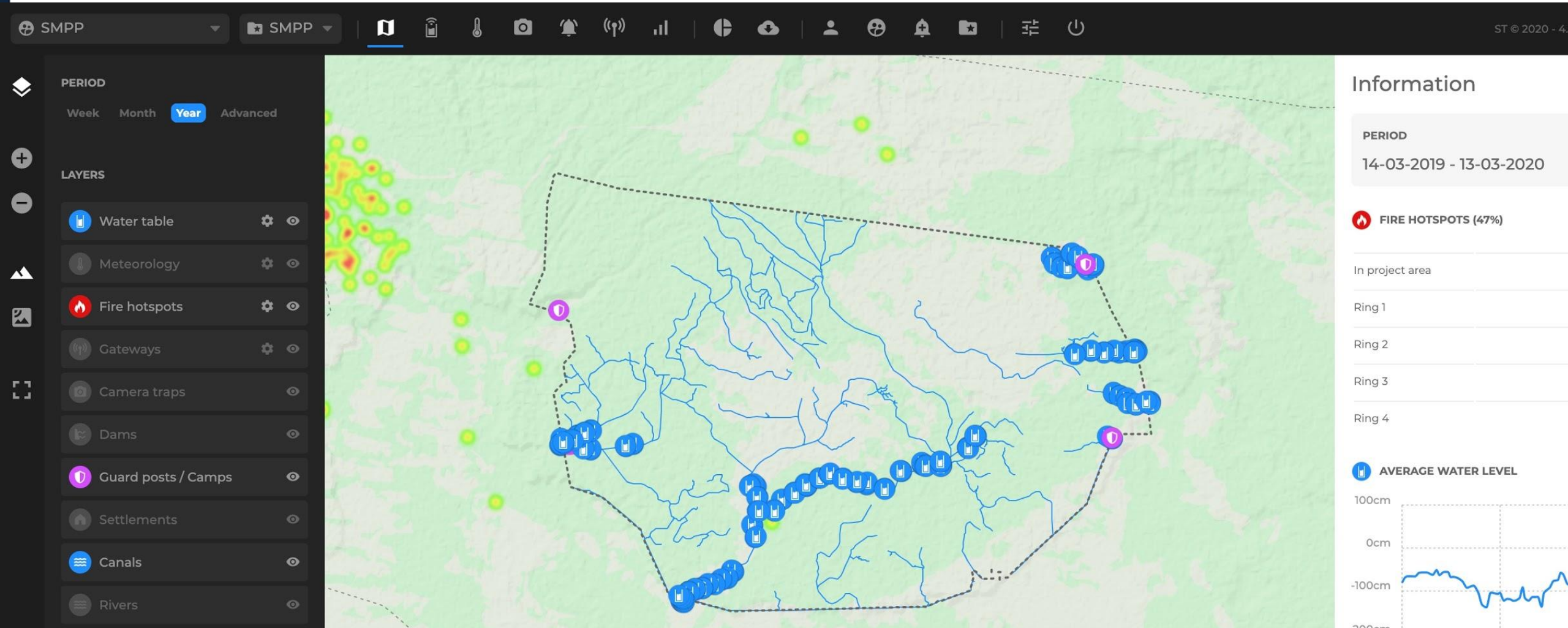
- Sensor hub supports four different sensor types
- Ultrasound water table sensor is accurate to 2mm
- Up to 3-year battery life on standard AA batteries
- Data sent via long-range WiFi or Satellite
- Heavy duty enclosure for harsh environments, rated IP-67 waterproof
- Small form factor (10cm x 10cm x 4cm)

Works together with smoke detection cameras to manage and prevent forest fires

DASHBOARD

Landscape monitoring data, accessible
from the cloud





Satellite or topo map layers contextualize project
Custom layers show dams, patrol posts, sensor hubs, surrounding conservation areas and more
Updates from each sensor in the dashboard occur hourly

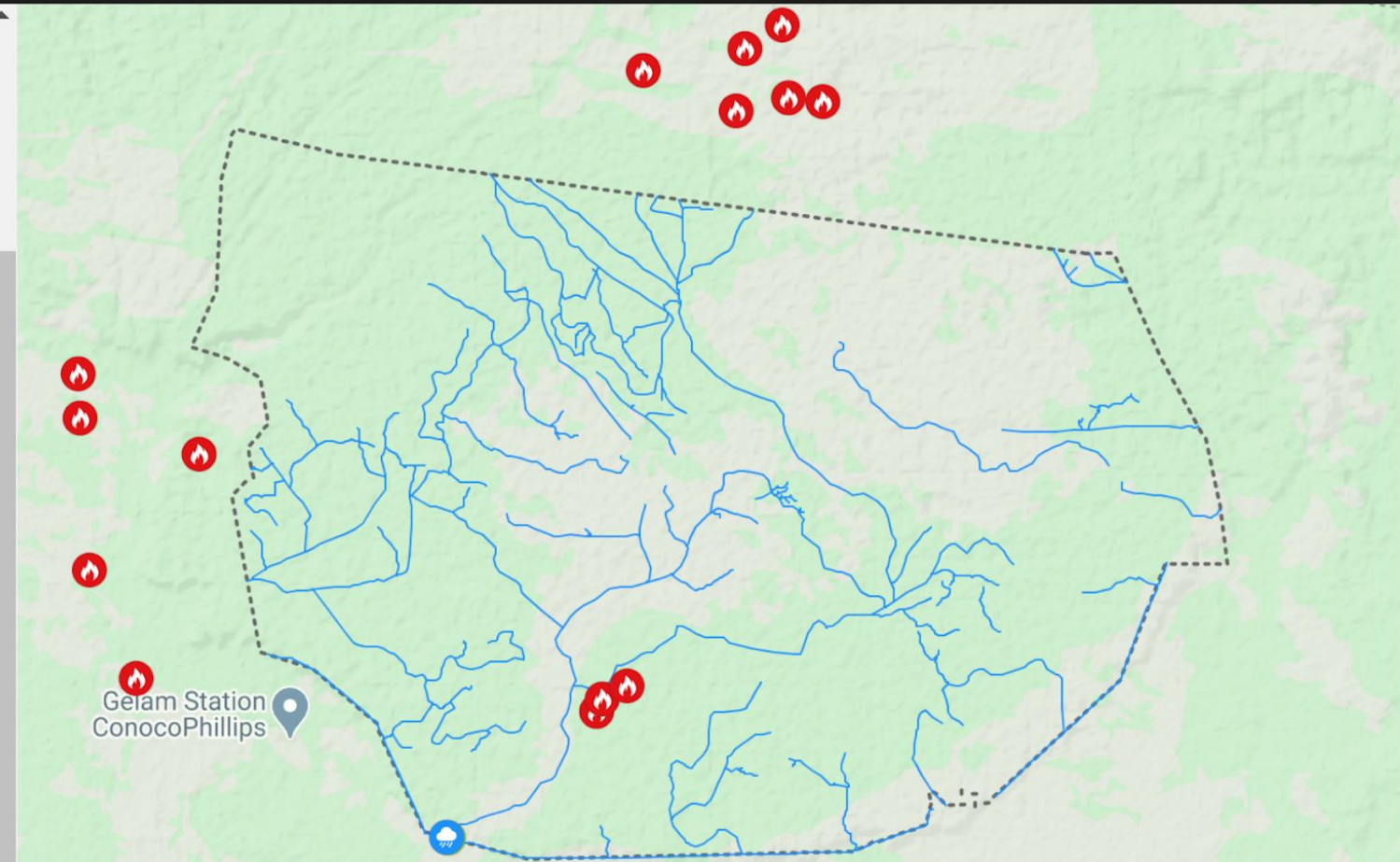


SELECT END DATE

17-03-2020


LAYERS

- Water table
- Meteorology
- Fire hotspots
- Gateways
- Camera traps
- Dams
- Guard posts / Camps
- Settlements
- Canals




Information

PERIOD
01-03-2019 - 17-03-2020

 FIRE HOTSPOTS (0%)


In project area	3
Ring 1	132
Ring 2	456
Ring 3	443
Ring 4	261

 AVERAGE WATER LEVEL

100cm

0cm

Integrated hotspot tracking via NASA MODIS
Overlay historical fire and rainfall data with current water levels to identify high-risk areas
Custom mobile and email alerts for hotspot detection or water level fluctuation

SMPP | SMPP |  ST © 2020 - 4.11.3

Report

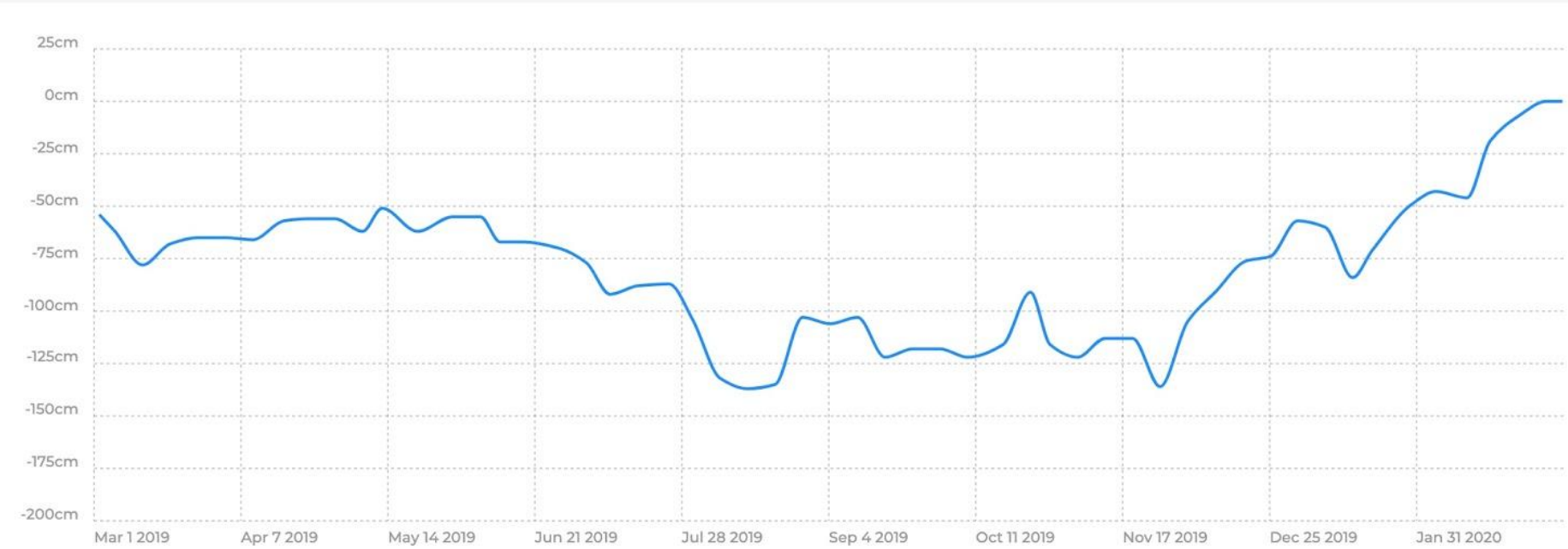
[Generate PDF](#)



ORGANIZATION
SMPP

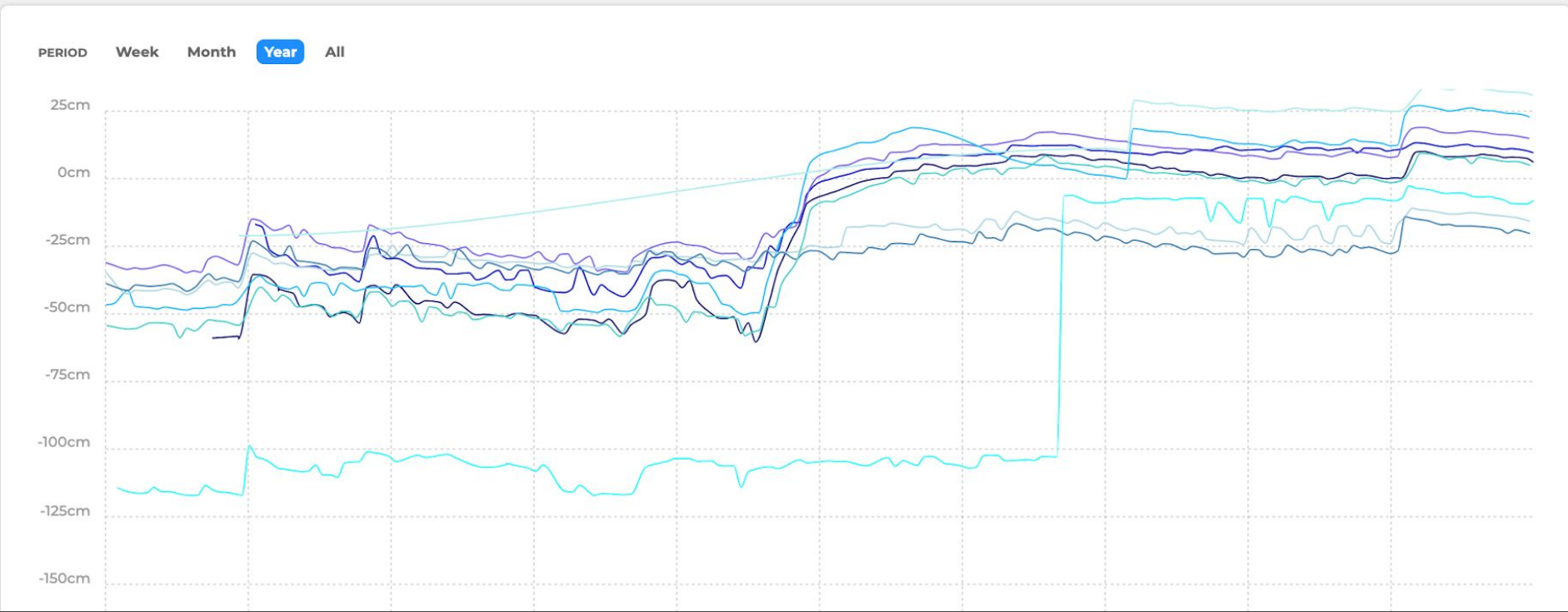
PERIOD
01-03-2019 - 09-03-2020

 Average water level

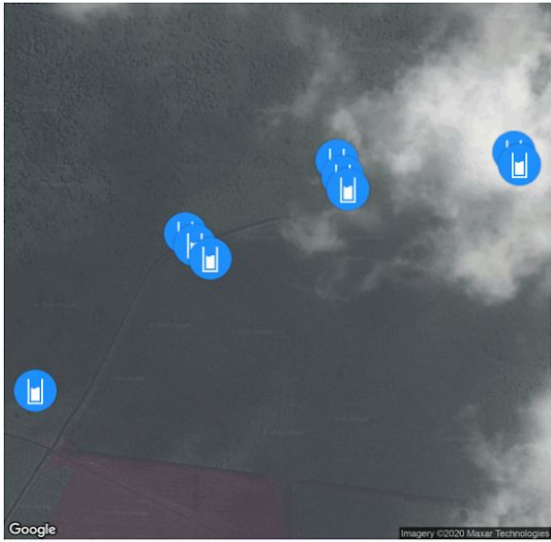


Customizable, on demand reporting (average, weekly, monthly and annual data views)
Water level distribution and statistics for all sensors
Export to PDF or through API

Select cluster



Cluster information



Label Offset

- Group sensors by area to correlate measurements, add existing data via simple CSV/KML/GeoJSON upload
- View and configure sensor connectivity, calibration and notifications
- Track if sensors are online/offline



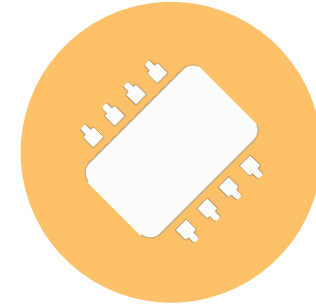
Low Orbit Satellite Connections

- Better connectivity and uptime in forest cover areas
- Lower setup costs
- Ideal for hard-to access areas
- Trusted satellite network
- Comparatively affordable
- Available 2021



Soil-Powered Battery

- No chemical batteries
- 10-year battery life
- Reduces methane emissions
- Perfect for peatlands, drawing energy from water, plants and soil
- Currently beta testing



Machine Learning

- Advanced sound and image recognition enables IoT hubs to analyze data before upload and have real time tracking
- Build data model based on collected training data for IA to improve data analysis and adaptive management

FOREST
CARBON



**Sustainability
Tech**

Thank You

